

The logo for Melvyn Danes Estate Agents is located in the top right corner. It consists of a yellow oval with a green border. Inside the oval, the word "melvyn" is written in a small, grey, sans-serif font. Below it, the word "Danes" is written in a large, bold, green, sans-serif font. Underneath "Danes", the words "ESTATE AGENTS" are written in a smaller, grey, sans-serif font.

melvyn
Danes
ESTATE AGENTS

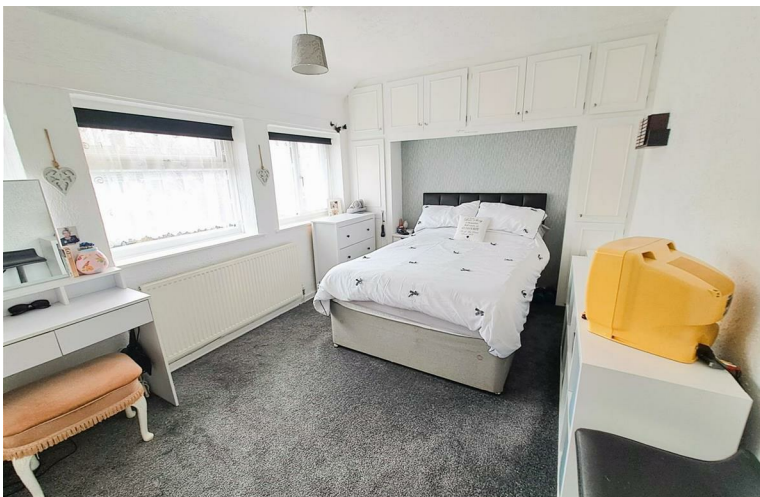
The background of the advertisement is a photograph of a two-story white terraced house. The house has a dark grey tiled roof with a brick chimney on the left. The ground floor features a dark blue door and a window with white frames. A black car is parked in a paved driveway in front of the house. A black metal gate and fence are visible on the right side of the driveway. The sky is clear and blue.

**Admington Road
Sheldon
£1,100 Per Month**

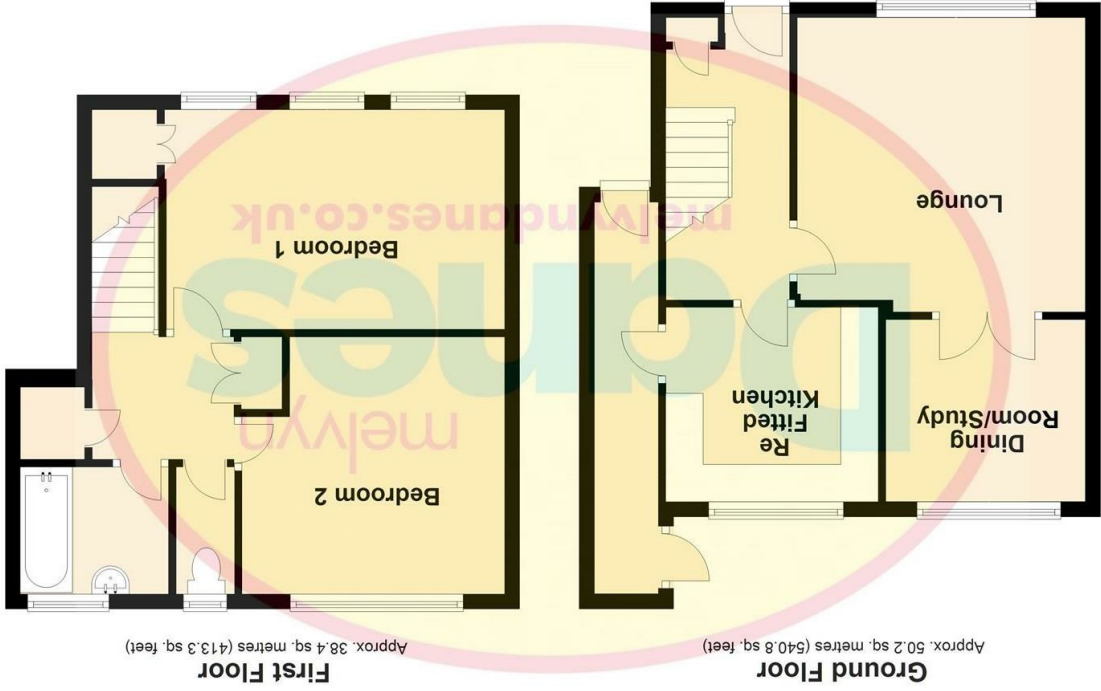
Description



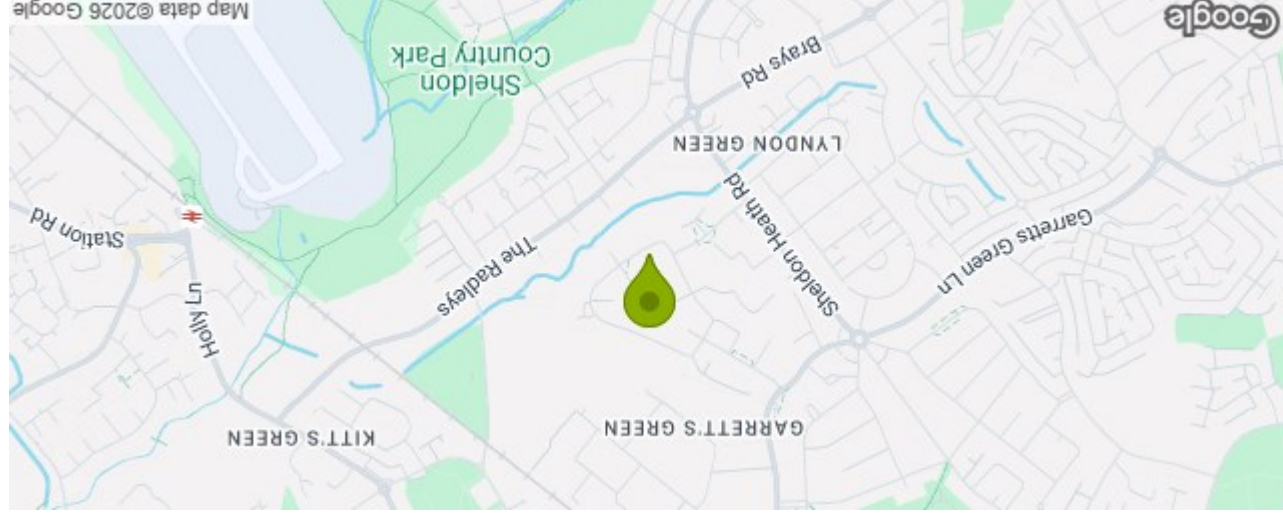
Accommodation



BROADBAND/MOBILE: Please refer to checker www.ofcom.org.uk for broadband and mobile coverage at the property. From data taken on 20/01/2026 we understand that the standard broadband download speed at the property is around 8 Mbps, and the estimated fastest download speed currently achievable for the property post code area is around 1800 Mbps. Actual service availability or speeds received may vary depending on the time a speed test is carried out. Mobile coverage can vary depending on the network provider and other factors that can affect the local mobile reception and actual services available may be different depending on the particular circumstances, precise location and network outages.



Total area: approx. 88.6 sq. metres (954.1 sq. feet)



**62 Admington Road Sheldon Birmingham B33 0RT
Council Tax Band: B**

Energy Efficiency Rating	
Potential	80
Current	74
Very energy efficient - lower running costs A (92 plus) B (81-91) C (69-80) D (55-68) E (39-54) F (21-38) G (1-20) Not energy efficient - higher running costs	
EU Directive 2002/91/EC England & Wales	

Please note that all measurements and floor plans are approximate and quoted for general guidance only and whilst every attempt has been made to ensure accuracy, they must not be relied on and do not form part of any contract.